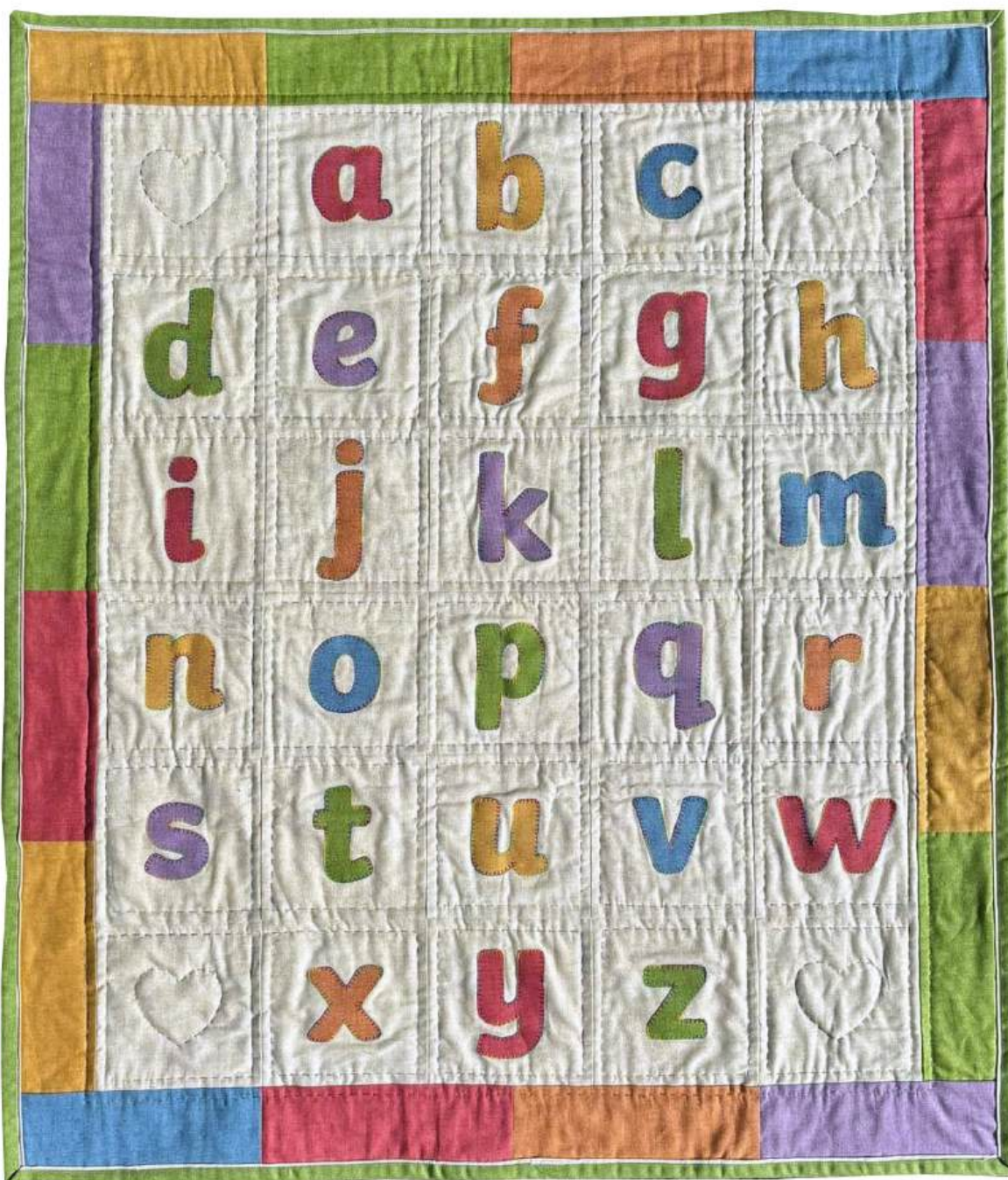


## Alphabet Cot Quilt (30" x 35")



### Fabric requirements (included in kit):

- 3" WOF (width of fabric) strip of Makower Cottage Cloth II in B2 Chambray, G4 Pear, O3 Apricot, P2 Wisteria, R3 Strawberry and Y3 sunshine
- 1 metre of Makower Cottage Cloth II in L1 Pearl
- ¼ metre of Makower Cottage Cloth II in G4 Pear
- Pack of Bondaweb

### Additional requirements (not included in kit):

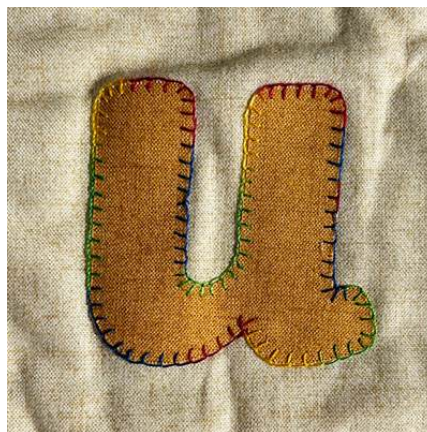
- 1 metre of fabric for backing
- 32" x 37" piece of wadding
- Thread for piecing and quilting

### Cutting instructions:

1. For the first border, cut 8" by 3" strips from the strips of coloured fabric, in these numbers:  
Red, yellow, purple, green - 3 each  
Blue, orange - 2 each
2. Cut 30x 5 1/2" by 5 1/2" squares for the centre of the quilt from the cream fabric.
3. Cut 4x 1 3/4" WOF (width of fabric) strips from the cream fabric for the flange binding.
4. Cut 4x 1 1/2" WOF strips from the green fabric for the flange binding.

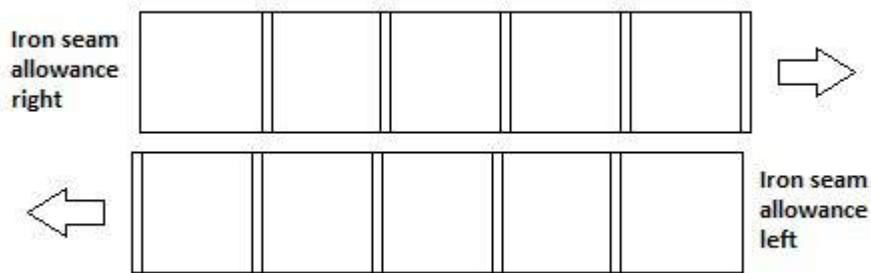
### Quilt construction (seam allowance of 1/4" assumed throughout):

1. Trace the alphabet onto the paper side of the Bondaweb.
2. Following the instructions on the packet, fuse the letters to the remainder of the coloured fabric strips (don't forget to fuse to the wrong side of the fabric!) – the letters in each colour are as follows:
  - i. Red: A, G, I, W, Y
  - ii. Yellow: B, H, N, U
  - iii. Orange: F, J, R, X
  - iv. Green: D, L, P, T, Z
  - v. Blue: C, M, O, V
  - vi. Purple: E, K, Q, S
3. Don't forget to double check you have the correct letters for each colour as several are very similar and they are reversed (don't use d instead of b for example!).
4. Cut out each letter, remove the paper backing and fuse each of the fabric letters to the centre of a cream square - you should have 4 blank squares left over.
5. Blanket stitch around each letter to hold it in place and prevent fraying. You can use any colour cotton thread – we used a variegated Mettler cotton, reference number 9840.



6. Sew the squares together in 6 strips of 5 squares, as shown in the main picture.

**Tip: When you press the seams flat on each of the strips, press them in opposite directions on adjacent strips so they butt up against each other - this should make it easier to ensure the squares are sewn accurately - see diagram below.**



7. Sew the strips together to form the centre of the quilt.
8. Sew the coloured rectangles together as shown in the main picture. Join the left and right strips to the quilt centre, then join the top and bottom strips – the quilt top is now complete.
9. Sandwich the quilt top, wadding and backing together and baste or pin securely. Quilt as desired – we hand quilted around each square and around the full border, then added a hand quilted heart to each blank square, using variegated Mettler cotton, reference number 9840.
10. The quilt is finished with a flange binding. Join the ends of the binding strips to make two long strips, one cream and one green, then join together to form one strip – the cream side should be wider than the green. Press the seam towards the green fabric.



11. Fold the strip in half wrong sides together and press – you should have a small amount of cream showing on the green side.



12. Join the binding to the rear of the quilt, sewing  $\frac{1}{4}$ " from the edge with the cream fabric facing up.
13. Fold the binding to the front and stitch in the ditch between the cream and the green fabric, ensuring you mitre the corners as you go – The quilt is now complete - if you have any questions or queries please don't hesitate to contact us at Pelenna Patchworks!

Handwriting practice sheet featuring the word "Lipod" written twice in a large, bubbly, outlined font. The letters are designed for coloring or tracing. The word "Lipod" is written in the top row, and "lipod" is written in the bottom row. The letters are thick and rounded, with a consistent outline thickness.

n m l k

r p q o

v w t s

s e x w